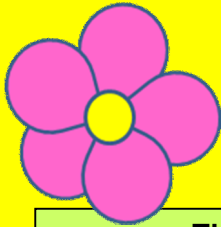


3rd Annual Spring Ball

Jo'burg Child Welfare and Touch Life Centre in partnership with Dibana Consulting invites you to its third annual charity spring ball. This prestigious event is again aimed at raising much needed funds for two of Johannesburg's charity organizations. The spring ball promises the perfect opportunity for corporates to network with existing and potential clients, while demonstrating the importance of social responsibility in economically challenging times.



Date: Saturday 5 September 2009
Venue: Park Hyatt Hotel in Rosebank
Time: 19h00 for 19h30
Dress: Black tie and ball gown



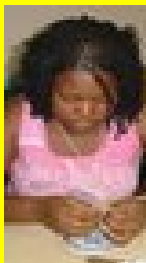
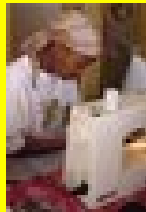
Themba lethu

Developing and implementing a sustainable poverty alleviation and economic empowerment programme to unemployed women in the Johannesburg CBD.

The Themba lethu demographic profile are aged between 18 and 24 years, young and unemployed women. Most have been involved with drugs and sex work on the streets.

Themba lethu has expanded its offering to include a more comprehensive service to female residents and their children in the area. Services include an early childhood stimulation programme, an aftercare and homework programme, a sports programme and a sustainable economic empowerment programme.

All these programmes have a HIV/Aids and counselling component. The programs include teaching skills such as beading, sewing, hairdressing, cooking, baking, computer and business skills.



The Touch Life Centre

The Touch Life Centre (TLC) is situated in Troyeville, one of the poorer suburbs on the edge of Johannesburg's inner-city area.

TLC was established in April 2006, by Cheryl Allen who had previously founded Door of Hope in Hillbrow, which rescues and finds homes for abandoned babies. Tony Parker retired early after 32 years with Murray & Roberts and joined Cheryl in setting up this Nursery School, which currently caters for sixty underprivileged children between the ages of two and a half and six. Our staff are drawn from the local community emphasising our commitment to upliftment and empowerment.

By charging a nominal fee of R50 a month per child, we not only offer these children the opportunity of a nursery school education which their families could not otherwise afford, but we enable many of the mothers to go out and find work, knowing that their children are being cared for between 7.30 a.m. and 4.30 p.m.

Cost per table of 10 people: R10 000.00 or R1000.00 per person
Includes – three course meal, wine, entertainment, and many more surprises
Cash bar available for any other drinks

For bookings:

Deborah De Wet 083 212 8996 dibanaconsulting@telkomsa.net

Tracey Pitout 011 298 8500 pr@jhbchildwelfare.org.za

On or before 21 August 2009